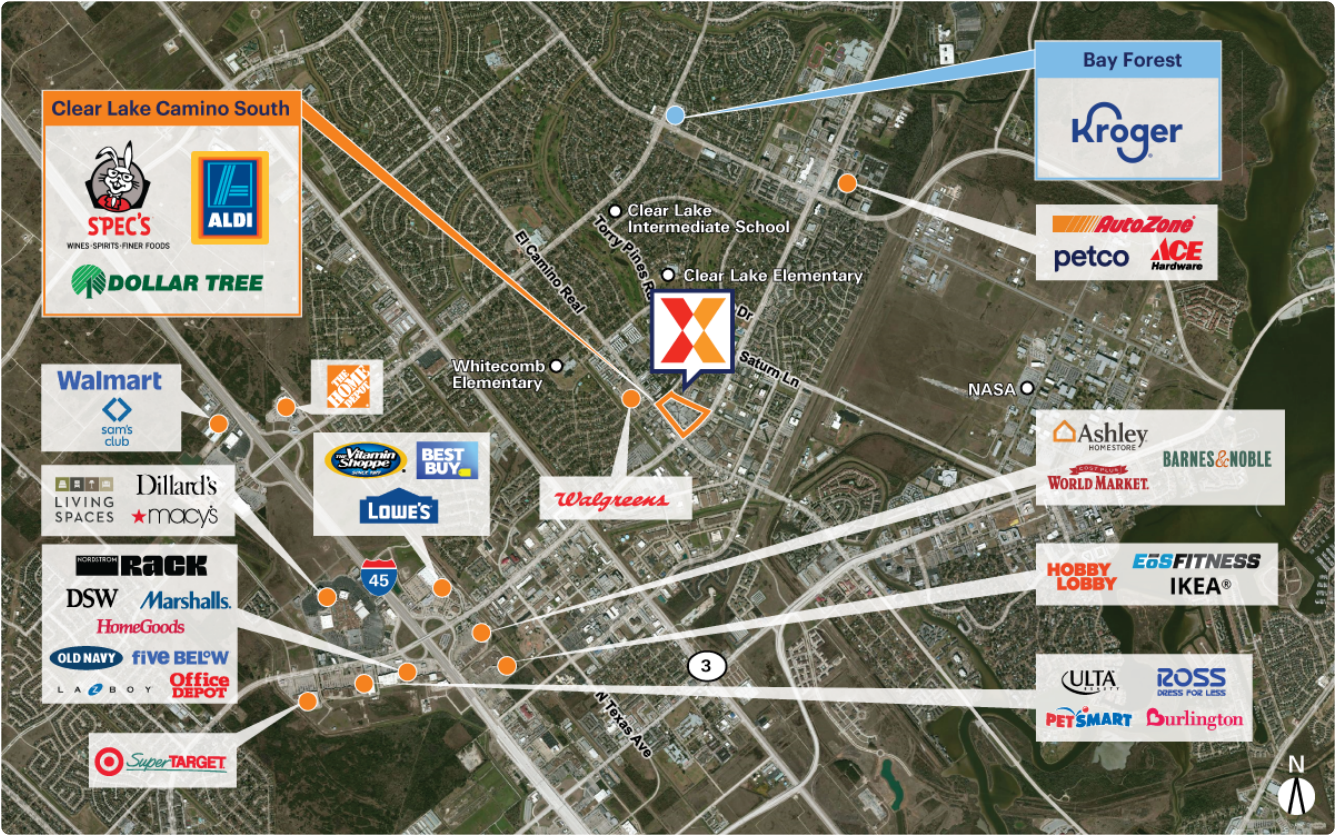


Clear Lake Camino South

16701 El Camino Real | Houston, TX 77062

Harris County Houston-Pasadena-The Woodlands, TX 103,214 Sq Ft

29.5565, -95.1206



Demographics	1 Mile	3 Miles	5 Miles
Population	16,589	77,866	185,144
Daytime Pop.	20,060	101,324	191,145
Households	7,439	33,695	74,174
Income	\$85,422	\$117,029	\$130,700

Source: Synergos Technologies, Inc. 2024

High visibility at intersection of Bay Area Blvd with 29K+ vehicles daily and El Camino Real with 20K+ vehicles daily (Kalibrate 2019)

ALDI-anchored center with top national brands including Spec's Liquor, Mr Gatti's Pizza and Taco Bell

Highly educated trade area with 44% having a college education within a 3-mile radius

Strong daytime population of 96K+ within a 3-mile radius, plus close proximity to NASA Johnson Space Center with a 10K+ workforce (NASA 2024) and Space Center Houston which ranks in the top 5 Texas attractions with 755K+ visitors annually (Placer.ai 2024)

Located within 2 miles of the Baybrook retail corridor with convenient access to I-45

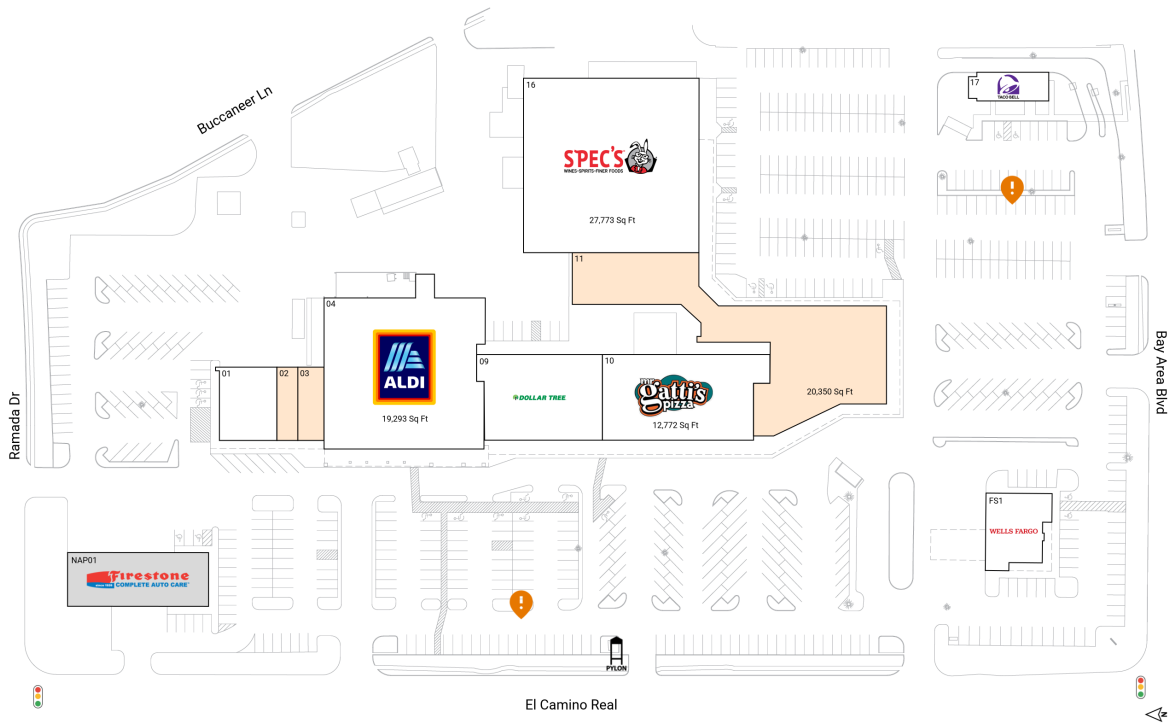


Clear Lake Camino South

16701 El Camino Real | Houston, TX 77062

Harris County Houston-Pasadena-The Woodlands, TX 103,214 Sq Ft

29.5565, -95.1206



Available Spaces

02	1,400 Sq Ft	360°	OPO 1	0 Sq Ft
03	1,737 Sq Ft	360°	OPO 2	0 Sq Ft
11	20,350 Sq Ft	360°		

Current Tenants

Space size listed in square feet

01	Go Shabu Hot Pot Grill	3,850
04	ALDI	19,293
09	Dollar Tree	9,744
10	Gatti's Pizza	12,772
16	Spec's Wine, Spirits & Finer Foods	27,773
17	Taco Bell	2,240
FS1	Wells Fargo	4,055
NAP01	Firestone Complete Auto Care	0

This site plan is for illustrative and information purposes only, showing the general layout of the shopping center; and is not a legal survey. Brixmor makes no representation or warranty that the shopping center is exactly as depicted as site conditions and tenant mix are subject to change over time.

1413

